

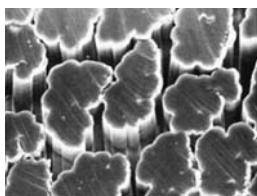
Viscose Rayon for wet laid nonwoven

# CORONA™

Regenerated fiber from wood pulp ,  
 “Viscose Rayon” is used for wet laid nonwoven application extensively  
 with utilizing hydrophilic property.

## ■ Regular type

Viscose Rayon possess fundamental shape and property for paper application



## ■ Tow type

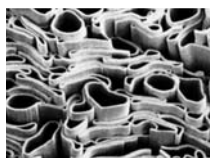
Regular type available in Tow form for flocky processing.

## ■ Dope-dyed type is available

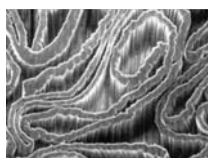
A type of kneaded pigment into fiber

## ■ Special cross section types

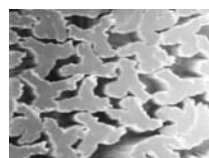
Four types with different cross sections are available , each having it's original special luster.



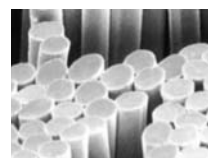
▲Hollow & Flat(SBH)



▲Ribbon & Flat(SBR)



▲Initial high water-absorbency(SA)



▲Super bright luster and deep shade(TBO)

## 「CORONA」product list for wet laid nonwoven

Types	Decitex <sub>(dtex)</sub>	Fiber length <sub>(mm)</sub>	Features	Capacity per bag
S B	0.3~17.0	3~30	Bright	15kg
S D	0.8~17.0	3~30	Dull	15kg
S BH	1.7, 5.6, 17.0	3~30	Hollow & Flat	10, 12kg
S BR	22, 56, 83, 170, 330	3~30	Ribbon & Flat	10, 12kg
T B	0.3~17.0	—	Bright(Tow)	15, 18kg
T D	0.8~17.0	—	Dull(Tow)	15, 18kg
S A	1.9, 2.2, 3.3, 7.8	3~25	Initial High Water-Absorbency	12, 14kg
A S B	1.7~17.0	3~30	Anti-Bacterial and Deodorant	15kg
T B O	0.8~2.2	—	Super-Bright and Deep shade(Tow)	18kg
G T	1.7~17.0	3~30	Dope-dyed	15kg

Note : For the fineness or cut length, please contact us.

## Daiwabo Rayon Co., Ltd.

11F Sakaisuji HommachiBldg.8-14, 1-chome Minamihommachi, Chuo-ku, Osaka 541-0054 Japan  
 Mail:dr-kanri@daiwaborayon.co.jp Fax: +81-6-6265-8105

[http://www.daiwabo.co.jp/rayon/en\\_index.html](http://www.daiwabo.co.jp/rayon/en_index.html)

“CORONA” is Daiwabo's trademark in Japan